

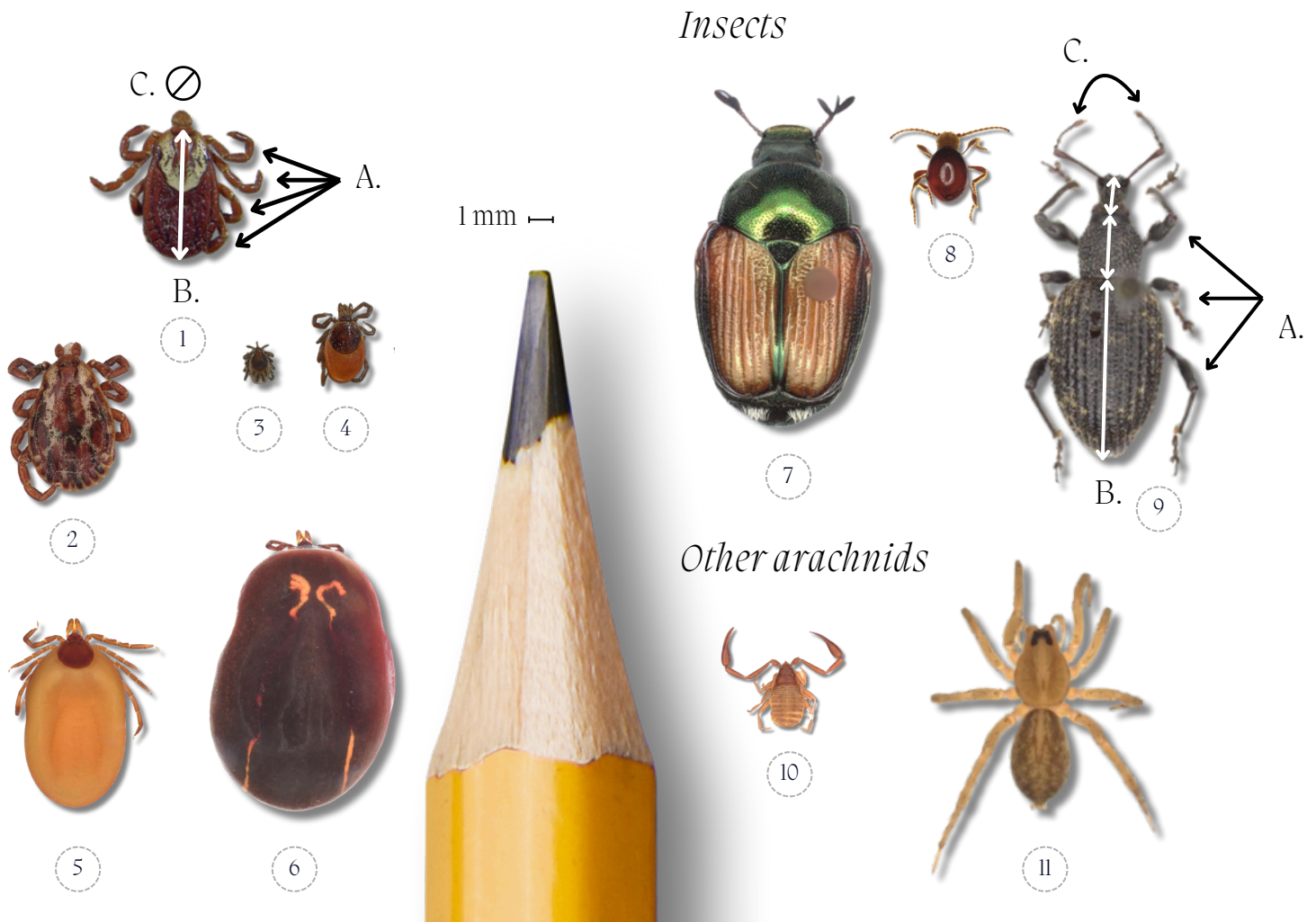
HOW TO RECOGNIZE A TICK

Tick characteristics

- A. 4 pairs of legs as adults and nymphs
- B. One single fused body
- C. No antennae

Other arthropod characteristics

- A. Insects have 3 pairs of legs while arachnids have 4
- B. 2 or 3 body segments
- C. Insects have antennae on their head which can be mistaken for legs



1. *Dermacentor variabilis* (American dog tick) female
2. *Dermacentor variabilis* (American dog tick) male
3. *Ixodes scapularis* (blacklegged tick) nymph
4. *Ixodes scapularis* (blacklegged tick) female, unengorged
5. *Ixodes scapularis* (blacklegged tick) engorged
6. *Ixodes scapularis* (blacklegged tick) engorged

7. *Popillia japonica* (Japanese beetle)
8. *Mezium affine* (shiny spider beetle)
9. *Otiorhynchus ovatus* (strawberry weevil)
10. Pseudoscorpion
11. *Trochosa* sp. (wolf spider) juvenile

Additional resources: <https://web.uri.edu/tickencounter/fieldguide/is-it-a-tick/?/>

